

Fast Find Grid

Disposable CT Biopsy Grid

Cat. No. EG6500

Contents: 25 Grids

Instructions for Use:

1. Remove backing from tape.
2. Place Fast Find Grid tape side down on the patient, over the area of interest.
3. Scan through the area of interest.
4. On each scan slice, you will see twelve dots on the skin surface.
5. Determine which scan slice the radiologist will want to work from.
6. Have the radiologist determine which dot best represents the point of entry on the patient.
7. You will notice that on each scan slice there is a larger gap between two of the dots. These two dots represent #1 and #2 on the grid.
8. Once the reference dot for the point of entry is chosen, you will need only to count out from either side on the scan slice to determine which number line on the grid the reference dot represents.
9. Move the patient to the pre-determined scan slice location.
10. Turn on the laser light and mark through the area with a felt tip pen where the light crosses the proper line.
11. Before removing the grid, mark a reference point on each corner cross-hair of the grid with a felt tip pen.
12. Remove the grid and perform the biopsy.

NOTE: If necessary, the Fast Find Grid can again be placed on the patient by aligning the four reference points marked on the patient with the four corner cross-hairs on the grid.

CAUTION: Federal law restricts this device to sale by or on the order of a physician.

Distributed by:

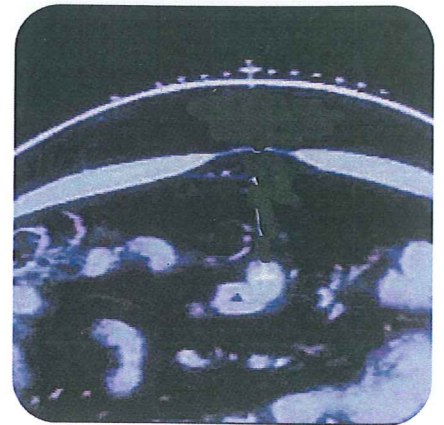
Manufactured by:
WEBB MFG.
Philadelphia, PA 19147
www.fastfindgrid.com



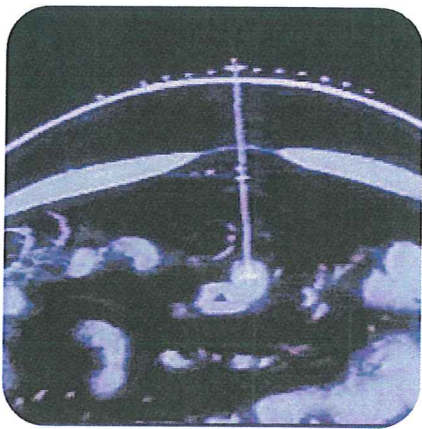
Remove backing from tape.



Scan through the area of interest.



On each scan slice, you will see twelve dots on the skin surface.



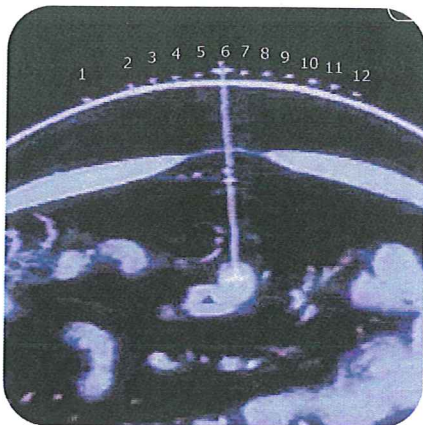
Determine which scan slice the radiologist will want to work from.



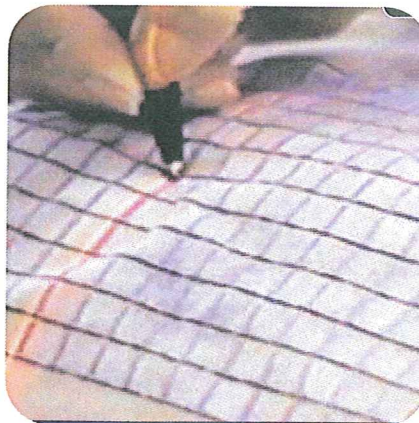
Have the radiologist determine which dot best represents the point of entry on the patient.



You will notice that on each scan slice there is a larger gap between two of the dots. These two dots represent #1 and #2 on the grid.



Once the reference dot for the point of entry is chosen, you will need only to count out from either side on the scan slice to determine which number line on the grid the reference dot represents.



Turn on the laser light and mark through the area with a felt tip pen where the light crosses the proper line.



Before removing the grid, mark a reference point on each corner cross-hair of the grid with a felt tip pen.