

Wall Mount Computer Station WMCS

Assembly Instructions



How can we improve our assembly instructions?
Your comments and suggestions are important to us.
Please e-mail us at: support@versatables.com.

Hardware & Parts List

Wall Mount Computer Station

50mm Furniture Bolt



Qty:4

8mm Phillips Machine Screw



Qty:4

1/4 - 20 Phillips Head Bolt



Qty:4

LCD Holder



Qty:1

4mm & 8mm Allen Wrench



Qty:1

Upright Pole



Qty:1

Zip Tie & Curly Tie



Qty:5

Keyboard Platform



Qty:1

Keyboard Bracket



Qty:1

Upright Pole Bracket



Qty:2

Toggler



Qty:6

3/8 - 16 x 1" Socket Head Bolt



Qty:6

CPU holder



Qty:1

Clamp Bushing



Qty:2

Clamp



Qty:1

CPU Holder Mount Bracket



Qty:1

1" 7/8 Velcro Pads
1 Velcro Loops
1 Velcro Hooks



Qty:2

Additional Tools Required

Drill & 1/2" Drill Bit



Phillips Screw Driver



Support:

Local: 310-353-7100

Toll Free: 888-929-0322

Fax: 310-353-7109

Support@VersaTables.com

Step 1

Install Toggles

Toggler



Qty:3

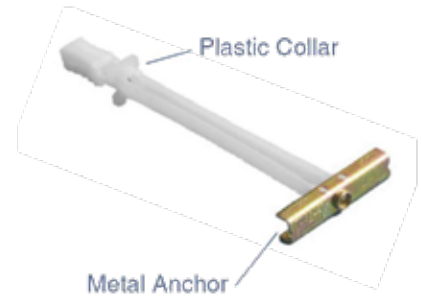
Drill & 1/2" Bit



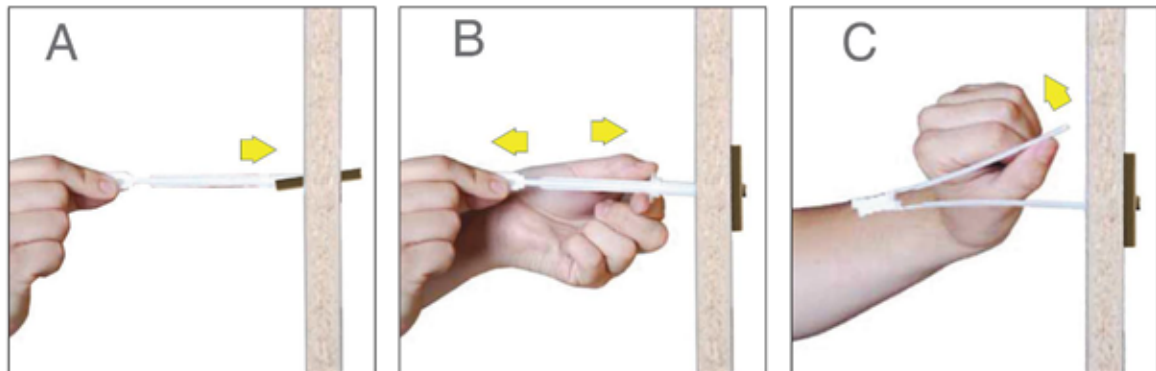
A: Drill a 1/2" hole. Slide Metal Anchor of Toggler through hole. Minimum clearance behind wall is 1-7/8".

B: Pull end of Toggler until Metal Anchor is flush against inside of wall. Push Plastic Collar into wall to lock in place.

C: Snap exposed material off, flush with Plastic Collar.



NOTE: Extra Toggle Bolts are provided



Step 2

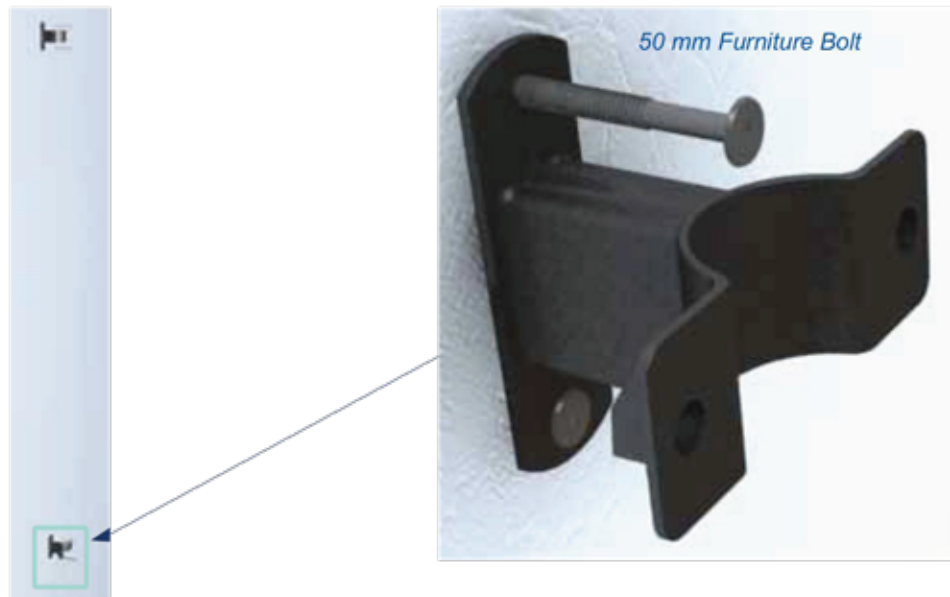
Upright Pole Brackets

Attach Upright Pole Brackets to the wall using (4) four 50mm Furniture Bolts.

50mm Furniture Bolts



Qty:3



Step 3

Upright Pole

Secure Bottom Pole Holder using (2) 3/8 - 16 x 1" Socket Head Bolts.

3/8 - 16 x 1"
Socket Head Bolt



Qty:2



3/8 - 16 x 1" Socket
Head Bolt

Step 4

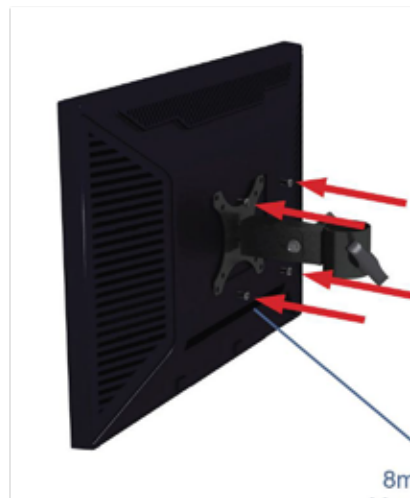
LCD Monitor

Attach LCD Monitor using (4) 8mm Phillips Machine Screws.

8mm Phillips
Machine Screw



Qty:4



8mm Phillips
Machine Screw

Step 5

LCD Bracket

Slide LCD Bracket.



Step 6

Upright Pole

Secure Top Pole Holder using (2) 3/8 - 16 x 1" Socket Head Bolts.

3/8 - 16 x 1"
Socket Head Bolt



Qty:2



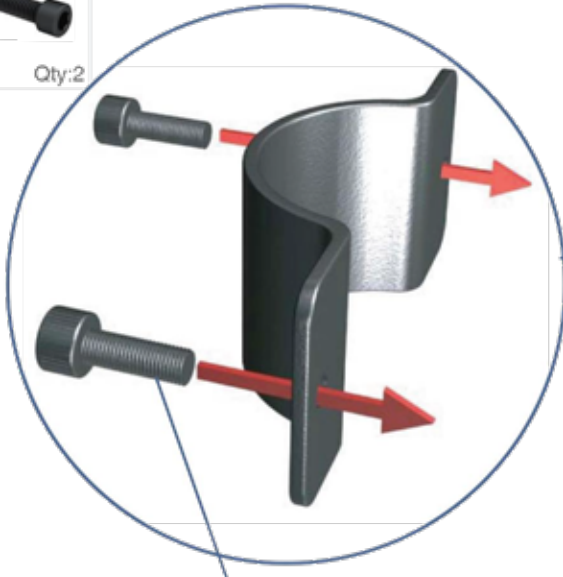
Step 7

Attach Keyboard Bracket to Pole at the desired height/side using (1) Clamp Bracket and (2) 3/8-16 x 1" Socket Head Bolts.

3/8 -16 x 1"
Socket Head Bolt



Qty:2



3/8 -16 x 1" Socket
Head Bolt



Step 8

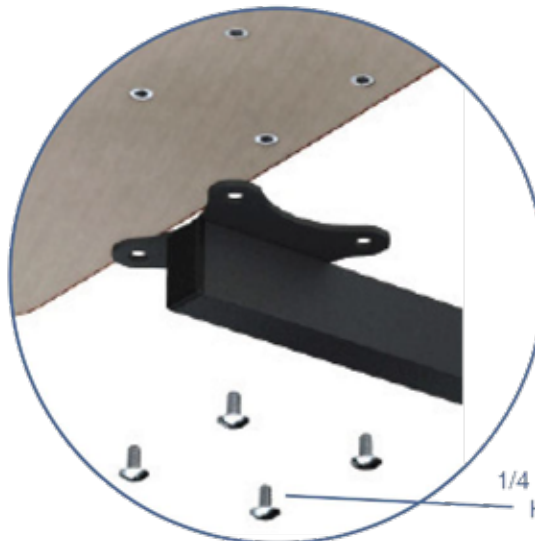
Keyboard Platform

Attach the Keyboard Platform to Keyboard Bracket using (4) 1/4-20 Phillips Head Bolts.

1/4-20 Phillips
Head Bolt



Qty:



1/4 - 20 Phillips
Head Bolt

Step 9

Attach mount bracket to CPU holder

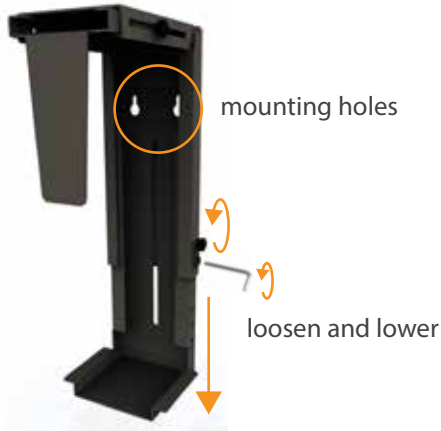
Use (2) 20mm Furniture Bolts.

20mm Furniture Bolt



Qty: 2

NOTE: If necessary, loosen the two stoppers and lower bottom piece to expose the mounting holes



Step 10

Attach CPU Holder At the desired Height.

Use (1) Clamps and (2) 3/8 1/6 x 1" Socket Head Bolts.

Clamp



Qty: 1

3/8 1/6 x 1" Socket Head Bolt



Qty: 2

Clamp Bushing



Qty: 2



Step 11

Attach Velcro Pads to both your CPU and CPU Holder.

Velcro Pads



Qty: 2

Once in place, adjust Holder and tighten Thumb Nuts to keep CPU secure.



CPU holder Adjustability

