

# 2 STEP FOOTSTOOL

## Product Advantages

Ideal for lateral weight bearing exams

Safety handles for patient support

Durable, non-slip surfaces

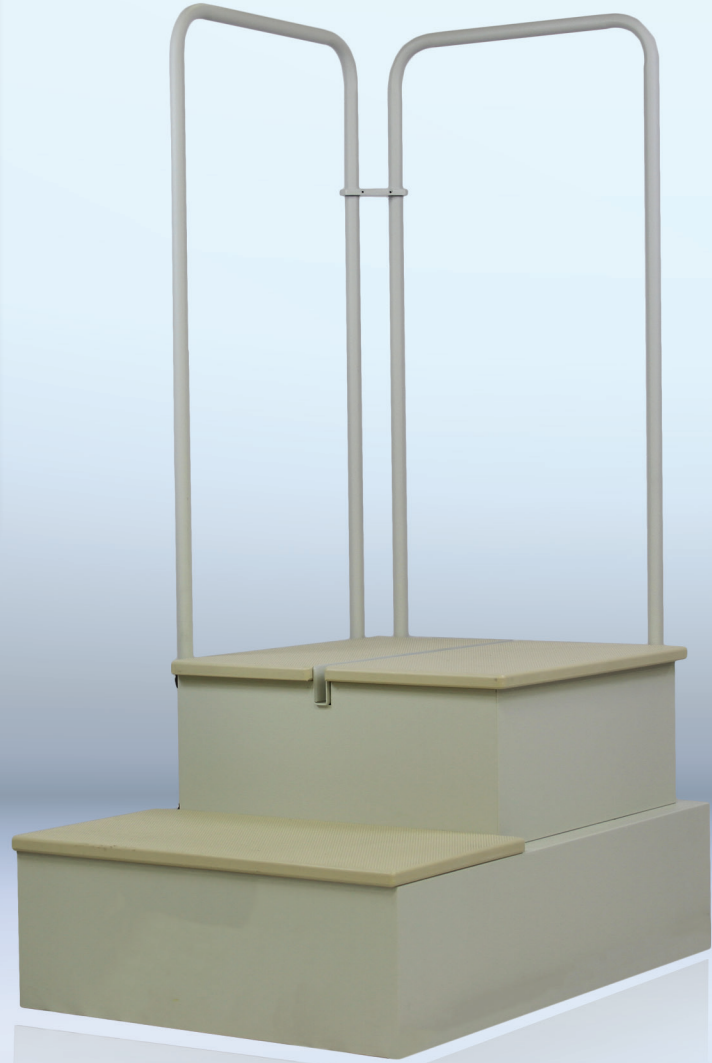
16 in. high platform

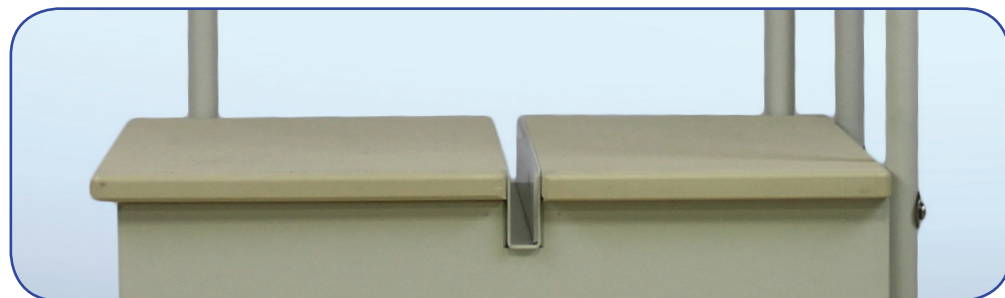
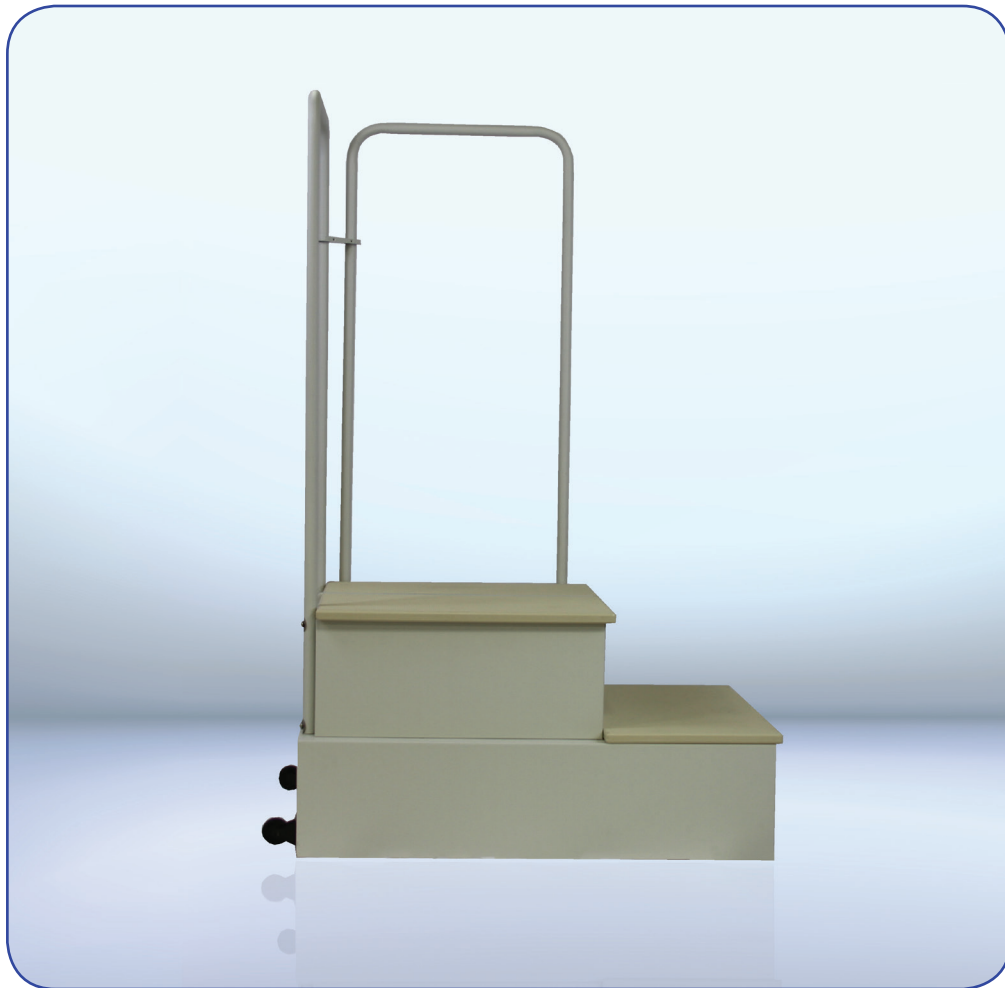
Slot for a 17 x 17 in. cassette size imaging receptor or smaller

Tilt-back casters for easy mobility

Rated up to 500lb.

The **Two Step Footstool** solves the most common problem with weight bearing lateral feet exams. Most x-ray systems don't allow the user to bring the focal spot of the tube low enough for a perpendicular x-ray of the patient's feet. The Two Step raises the patient to 16" above floor-level so any x-ray system can effectively deliver proper images. It features dual patient support handles, easy to clean surfaces and tip-back casters for effortless placement and storage at half the price of the competition.





## Technical Data

Outside Dimensions	928 x 595 x 1370 mm
Slot width	17mm
Platform Dimensions	533 x 542 mm
Handrail Height	1370 mm
Weight Capacity	500 lb.