

Europa

PRODUCT BOOKLET



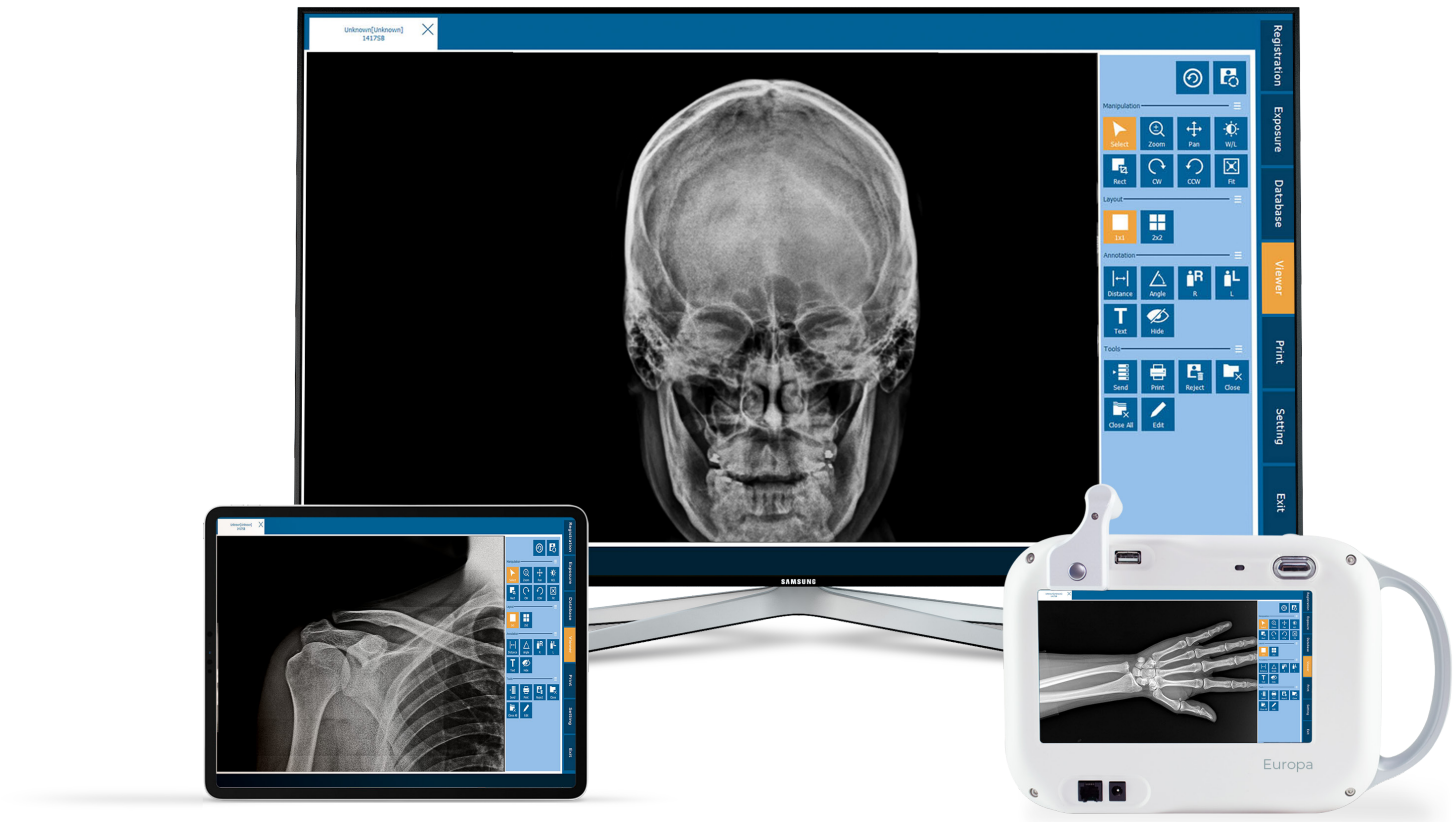
ASPEN IMAGING
HEALTHCARE

Game-Changing Portable Radiography



Europa is a solution that fits your workplace—no matter what size. Featuring a compact design, the wireless and battery-operated system allows operators to take x-ray images without the dedicated physical space required for a conventional radiographic system.

Unlike any other portable x-ray machines, Europa can acquire images directly to the device, allowing operators to review the image first, and then wirelessly transmit to a review PC via the built-in workstation.



**ALL-IN-ONE
PC WORKSTATION**
Integrated INTEL PC with
Windows 10 OS, preloaded
with DR Software



**EXTREME
LIGHT WEIGHT**
5.5 lbs for ultimate
portability and convenience



**REMOTE
SUPPORT**
Pre-loaded Remote Assistance
Software (TeamViewer)

Device Features

TWO USB PORTS

Used for powering peripheral devices and the laser component

7" TOUCH SCREEN DISPLAY

High Definition 7" touch screen display

ETHERNET PORT

Used for connecting exposure hand switch

CHARGING PORT

Simple battery charging — plugs directly into a residential 120V outlet

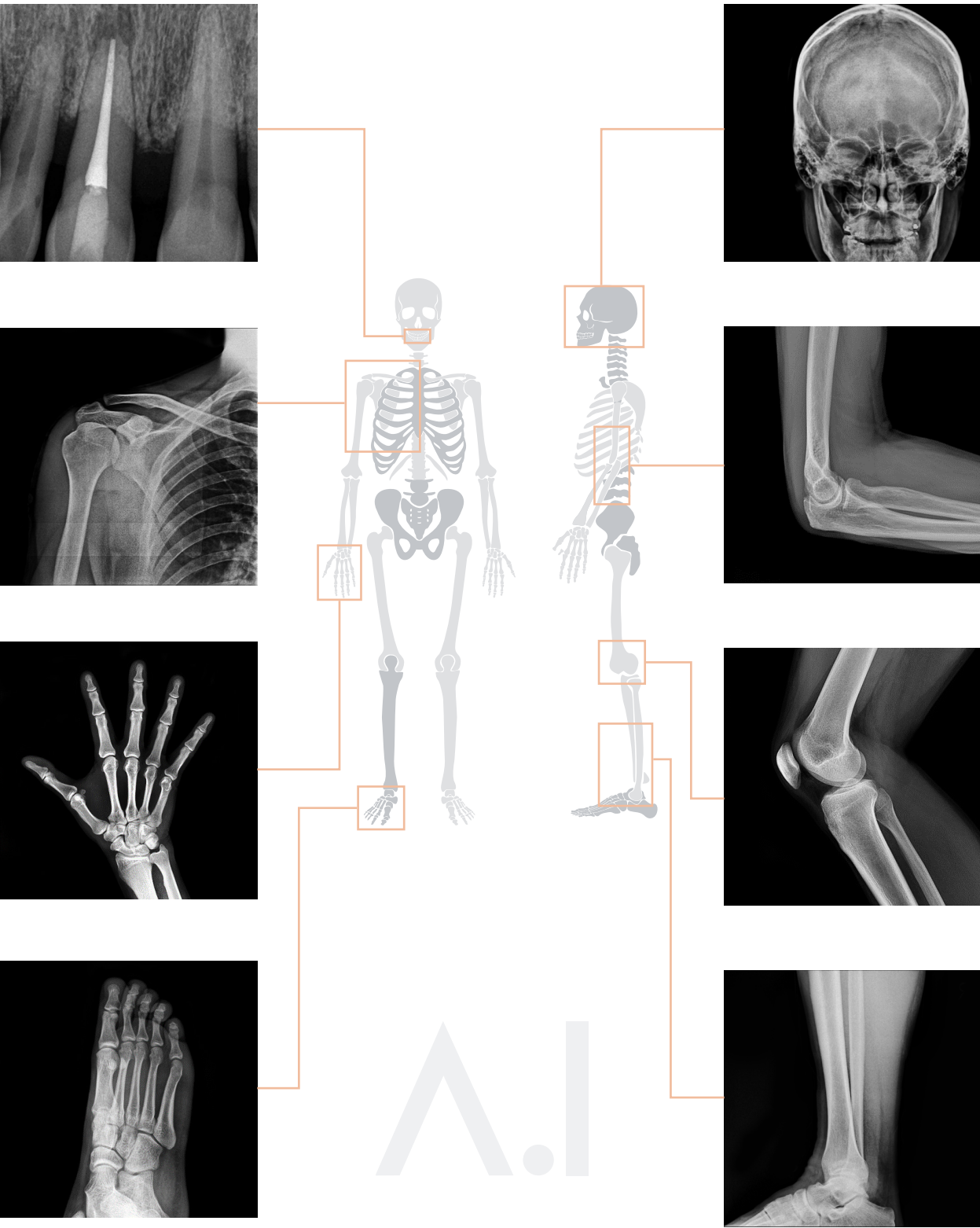
HAND STRAP

Hand Strap for ease of use, supporting Europa's 5.5lb lightweight

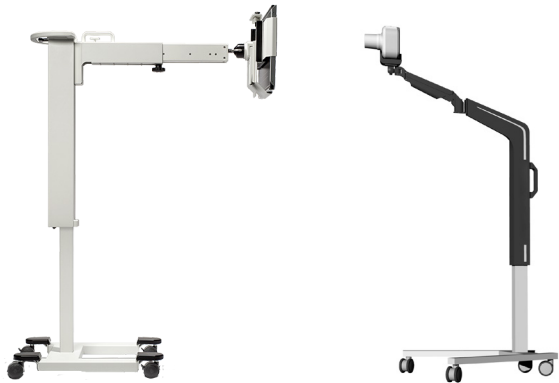


Key Features

- ✓ **COMPACT DESIGN**
requires minimal space and accommodations
- ✓ **MINIMIZE RADIATION**
to patient and operator with lowest possible dose
- ✓ **MAXIMIZE DAY-TO-DAY EFFICIENCY**
with industry-leading battery performance
- ✓ **BEGIN OPERATION IMMEDIATELY**
with seamlessly integrated software solution and built-in workstation
- ✓ **NO INSTALLATION OR ADDITIONAL EQUIPMENT REQUIRED**
allows for maximized efficiency and productivity
- ✓ **COMPLETELY WIRELESS**
- ✓ **SUPERIOR BATTERY PERFORMANCE**
- ✓ **EASY MEDICAL IMAGING**



Intended Use



Application Fields



Emergency Room



Operating Room



Sports Medicine



Orthopedics Outpatient Clinic



NICU Neonatal Intensive Care Unit



Hand Surgeon



Nursing Home



Podiatry



Medical Check-up Doctor's Office



ICU Intensive Care Unit



Urgent Care



Dental



WHAT'S INCLUDED

- Europa with Windows 10 Accessories
Carrying Case
Laser Light
Hand Switch
- Battery Charger
Collimator
Bluetooth Mouse

SPECIFICATIONS	
DIMENSIONS	9.19" (W) x 4.6" (H) x 4.16" (D)
WEIGHT	5.5 lbs (2.49 kg)
DISPLAY	7 Inch LCD Panel (Resolution: 1024 x 600)
INPUT POWER	25.2 VDC 1A
DEVICE POWER SOURCE	22.2 VDC (Battery)
FREQUENCY	100kHz
KV, MA	60 kV / 2 mA (Fixed)
X-RAY EXPOSURE TIME RANGE	0.03 ~ 1.30 sec (Selectable by Operator)
X-RAY TUBE MODEL	Toshiba D-081B
X-RAY TUBE FOCAL SPOT	0.8mm



COMPATIBLE DETECTORS AND ACQUISITION SOFTWARE

- Vieworks
Varex
Carestream
LG
- Bontech
Rayence
Pixxgen

Optional Products

BACKSCATTER REDUCTION ATTACHMENT

Optional attachment with an acrylic shield that will further protect the operator from the small amounts of back scatter radiation.



PORTABLE DETECTOR HOLDER

Capture high-quality images from any angle with multiple adjustment points to streamline your workflow. V-Base allows for increased stability and mobility. Compatible with any flat panel detector size.



PORTABLE CART

A medical-grade, portable tripod that allows operators to take highly precise x-ray images. The flexible articulating arm allows users to fix precise positions, featuring a custom attachment to connect to the bottom of the system.



MIRRORING KIT

A small attachment device that allows users to mirror display from Europa to a local monitor or TV screen. Includes a Bluetooth capable device that is paired with Europa, and a connection kit.





ASPEN IMAGING
HEALTHCARE

801 Jupiter Rd Suite 200, Plano, TX 75074, USA
sales@aspensate.com | (+1) 214-257-0113

WWW.ASPEN-IMAGING.COM

DISTRIBUTED BY



About Aspen Imaging

Aspen Imaging Healthcare is a Texas-based Original Equipment Manufacturer (OEM) providing complete imaging solutions for x-ray distributors and custom designed, private-labeled solutions for OEMs across the Americas.

Founded in 2015, Aspen Imaging has become one of the fastest growing Medical Imaging companies with offices in the United States, Canada, Mexico and South Korea.

