

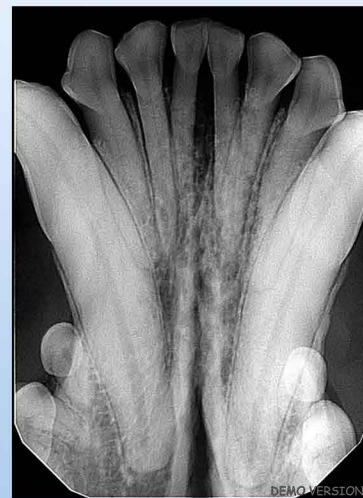
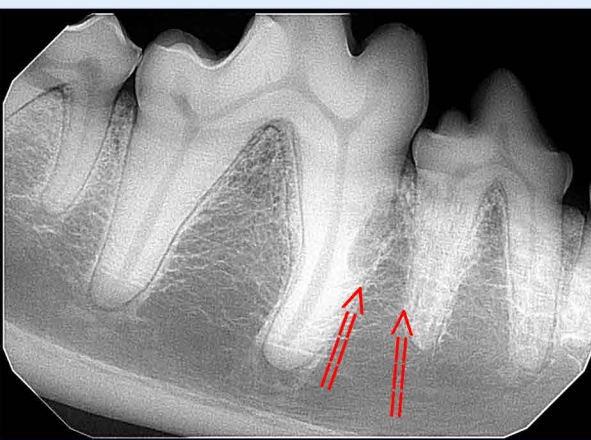
PS-2

Point & Shoot Digital Dental Sensor



PS-2

Point & Shoot Digital Dental Sensor



* External root resorption affecting the roots of the right mandibular fourth premolar and first molar

CONTROLLER:

Technology	CMOS
Pixel Size	19.5µm x 19.5µm
True Measured Resolution	> 20 lp/mm
Theoretical Resolution	> 26 lp/mm
Gray Scale	14 bits; 16,384 gray levels
Connection	High-speed 2.0 USB
Cable Length	9ft
Dynamic Range	75dB
Operating System	Windows 10 (64-bit)
Image Delivery System	5 seconds
Software	Image Calibration Files
Size 1 Active Area	30.01mm x 20.01mm
Size 2 Active Area	35.92mm x 25.82mm
Manufacturer's Warranty	2 Years

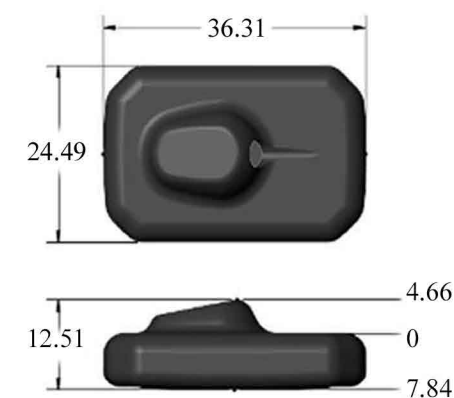


Highest Resolution Diagnostic Images

Features:

- Improved Image Quality over previous generation
- Wide Dynamic Range safeguards against both over and underexposure
- Waterproof reinforced capsule to resist physical damage
- Fully replaceable USB cable
- Four Anatomical Corners for easy positioning
- Designed for low dose handheld X-rays
- Made in the USA

PS-2 Size 1 Dimensions (Millimeters)



PS-2 Size 2 Dimensions (Millimeters)

