

DEL MEDICAL

OTC18^T

OVERHEAD TUBE CRANE SYSTEM
with Synchronized Tracking



System Overview

Clinical Performance

Versatile and intuitive, the OTC18T system delivers enhanced patient comfort and optimized workflow. Precisely designed to withstand high-volume throughput in hospital radiology departments, medical imaging centers and large orthopedic facilities with the need to perform a broad range of radiographic studies.

Our overhead tube crane features a sophisticated LCD touchscreen console, which supports enhanced capabilities to offer a more genuine patient experience. By integrating with a DELWORKS DR System and compatible generator, technologists are given the ability to adjust generator technique factors without leaving the patient's side. Its overhead horizontal and transverse tracks provide technologists with limitless imaging procedure capability, including cross-table laterals and other challenging views.

The system embraces operational efficiency via ergonomically-designed user controls with automated tracking to selected image receptors, and an industry-leading table with a patient weight of 800 lbs (363 kg). The OTC18T system was developed through innovation to produce the highest quality diagnostic images with ease. Built in the USA, it will deliver many years of continuous use and exceptional user-satisfaction.

System Includes

- ▶ Overhead Tube Crane with Vertical Tracking
- ▶ Automatic Collimator (Manual version available)
- ▶ EV800 Four-Way Elevating Float Top Table (RT100 optional)
- ▶ VS 300 Wall Stand (VT300 optional)
- ▶ DELWORKS DR System

Key Highlights



Technologist-Friendly
LCD Touchscreen



Vertical Tracking to Table or Wall
Stand



Electromagnetic
Braking



Premium Table
and Wall Stand



Integrated Workflow



Fixed and Wireless DR
Detector Options



Dose Management
Configurations

System Features

Intuitive Control and Flexible Positioning

The OTC18T ceiling-mounted tube crane highlights an advanced, technologist-friendly touchscreen console providing seamless operation of your radiographic system by displaying tube angulation, SID values, and customizable generator controls. Color-coded movement identification buttons provide optimal precision when setting up views. Peaceful and effortless movements are controlled by an electromagnetic braking system enabling fast and secure readjustments of the tube head. Its five-tier telescoping column delivers exceptional vertical movement of 71" (180 cm), capable of performing complete head-to-toe radiographic procedures including upright weight-bearing and recumbent tabletop exams.



Easy to Use

A conveniently placed all-lock release sensor is located just above the bottom section of the tube head handle. This sensor enables rapid manual positioning by allowing the user to grab the bottom handle to unlock the system and make swift readjustments.



Auto-Collimation

Accelerates patient positioning and reduces radiation exposure by automatically selecting the proper field-of-view for each body part. This feature is available through the DELWORKS DR acquisition software's pre-programmed APR settings.

Powerful Integration

The OTC18T System is powered by a compact and robust CMDR generator, available in 40, 50, 65 and 80 kW models. The generator is fully integrated with the DELWORKS DR Workstation, creating a streamlined workflow and enhancing dose efficiency.



Widescreen Display



► Vertical tracking to wall stand



Vertical Tracking

Synchronized motorized movement of the tube crane's vertical axis maintains precise centering between the x-ray tube and image receptor. Available functions include vertical tracking to table or wall stand. The result is quick, accurate alignment without the extra time and effort needed to make additional manual adjustments.

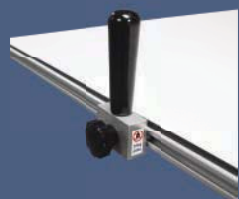
EV800 Elevating Four-way Float Top Table

The durable EV800 elevating four-way float top table delivers outstanding safety and usability. Featuring an exclusive four-point lift system and exceptionally quiet motor-drive, its smooth, scratch resistant table top lowers to a height of just 22 in (56 cm) to ensure stress-free patient transfers and adjustments. Offering a high patient weight capacity of up to 800 lbs (363 kg), stable continuous movement is possible through conveniently placed recessed foot treadles and table-side controls, suitable for increasing technologist performance and satisfaction.



Table-side Hand Controls

Accessories and Upgrades



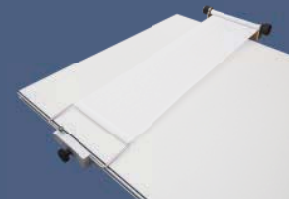
► Table Side Handgrips

These sturdy handgrips can be mounted along the entire length of both sides of the tabletop to enhance patient safety.



► Lateral Cassette Holder

This adjustable holder can be mounted along both sides of the tabletop allowing for access to a variety of cross-table lateral views.



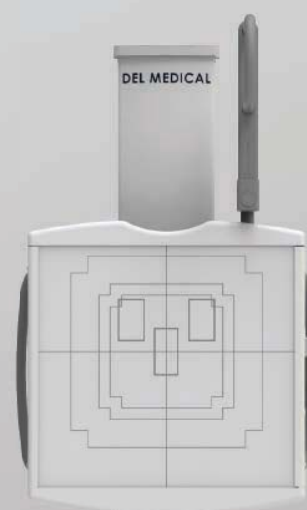
► Compression Band

This compression device is used to safely secure patients to the tabletop.

VS300 Wall Stand

The reliable VS300 wall stand utilizes electromagnetic 'fail-safe' locks to maintain operator confidence throughout the imaging procedure. Full receptor movement to the floor, patient-side handgrips and optional overhead handgrips promote efficient upright exams without placing unnecessary strain on the patient.

Designed for convenience, the VS300 technologist handgrip permits relaxed vertical travel by angling with the operator's wrist as the image receptor is raised or lowered.



Optional

RT100 Fixed Height Four-Way Float Top Table

The RT100 table features a 700 lbs (318 kg) patient weight capacity and a stain-resistant floating tabletop which glides freely on a precision roller bearing system. Float top movements are safely controlled by heavy-duty electric locks, activated by a conveniently placed foot treadle release. The standard cassette tray accommodates your choice of 14 x 17 in (35 x 43 cm) or 17 x 17 in (43 x 43 cm) detector with ease. Its all-steel structure and welded base provides maximum strength and reliability. In addition, the RT100's base can be used to store Anthem generator electronics, making it a great space saver for tight room layouts.



Rotating Tray * optional upgrade

The easy-to-use rotating tray enables manual rotation of the DR detector for use inside both table and wall stand. The stable one-handed operation supports fast portrait-to-landscape positioning without ever removing the detector from the tray. Fully extended steel slides activate locking mechanisms to assure detector protection when loading and unloading. Designed to accommodate a wide array of ISO 14 x 17 in (35 x 43 cm) cassette-sized detectors.



VT300 Tilting Wall Stand

The VT300 wall stand features a tilting image receptor, promoting comfort and precision for standing or seated examinations. Every adjustment is precisely counterbalanced to allow smooth operation with light effort applied by the technologist. This makes the VT300 accommodating to all users regardless of size or strength.

