

THE FOLLOWING SCENARIOS IN FACTITIOUS PATIENTS WILL DEMONSTRATE:

- Various body types using the Spine Positioning System II
- Their positioning and specific configurations of the SPS II used in particular clinical situations
- Various fluoroscopic images of these factitious patients that exemplify the value of the SPS II

PATIENT - LIZ

COMPONENTS USED: Platform Frame, Crescent Face Rest Pad, Contoured Torso Support Pad, Contoured Torso Wedge, 8" Semi-Round Bolster (not pictured)



SPS II set up for Liz shown here



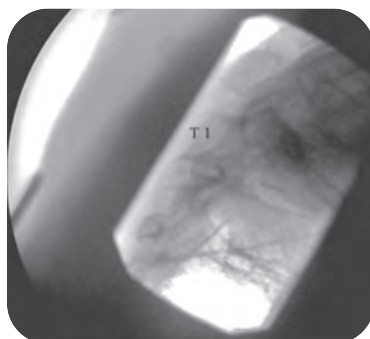
Liz in the SPS II while obtaining an AP image of the upper thoracic spine.



Liz in the SPS II while obtaining a lateral image of the upper thoracic spine.



AP image visualizing the T1-2 interlaminar space.



Lateral image primarily through the C7—T2 segments.



Contralateral oblique showing the upper thoracic facet joints.



OAKWORKS[®]
MEDICAL



SPINE POSITIONING SYSTEM II

PATIENT - CARL

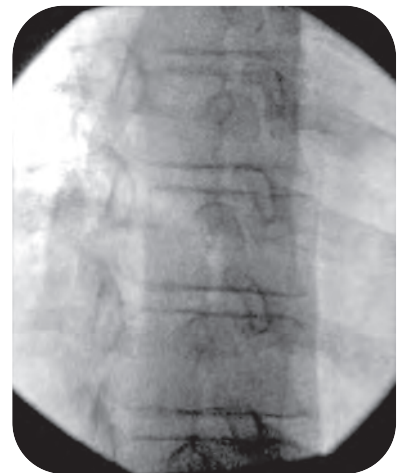
COMPONENTS USED: Platform Frame, Crescent Face Rest Pad, Contoured Torso Support Pad, Contoured Torso Wedge, 8" Semi-Round Bolster (not pictured)



SPS II set up for Carl shown here



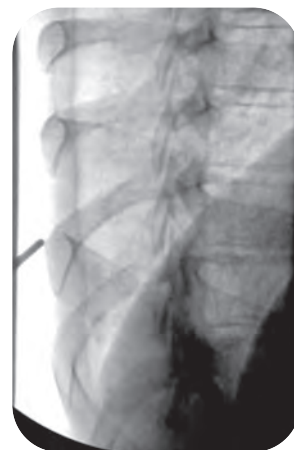
Carl in the SPS II while obtaining an AP image of the mid-thoracic spine



Right thoracic oblique image to visualize the trajectory for a transforaminal injection



AP image of the mid-thoracic spine for planning the trajectory for a left thoracic facet injection



Contralateral oblique showing the trajectory for targeting the mid-thoracic facet joint



SPINE POSITIONING SYSTEM II

PATIENT - JANE

COMPONENTS USED: Platform Frame, Crescent Face Rest Pad, Contoured Torso Support Pad, Contoured Torso Wedge, 8" Semi-Round Bolster (not pictured)



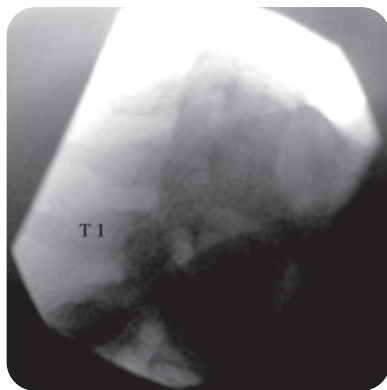
SPS II set up for Jane shown here



Jane in the SPS II while obtaining a lateral image of the cervical spine.



The lower cervical interlaminar spaces are seen without visualization of the mandible over the target interspaces



Lateral collimated image of the cervical spine. The C6-7-T1 interspaces are appreciated for all posterior approach cervical procedures such as interlaminar epidural steroid injections, facet injections, medial branch blocks and medial branch radiofrequency neurotomy.



OAKWORKS[®]
MEDICAL



SPINE POSITIONING SYSTEM II

PATIENT - ALICIA

COMPONENTS USED: Platform Frame, Crescent Face Rest Pad, Contoured Torso Support Pad, Contoured Torso Wedge, 7" x 12" Rectangular Adjuster Pad, 8" Semi-Round Bolster (not pictured)



SPS II set up for Alicia shown here



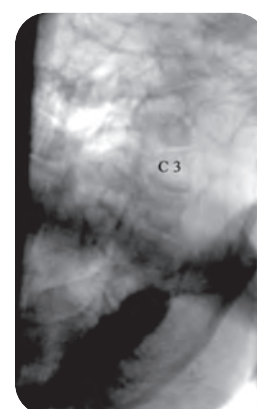
Alicia in the SPS II while obtaining a C3 pillar view



Demonstrates the generous amount of space under the head/face while laying comfortably in the SPS II



Lateral view of the cervical spine. The C2-3 to C7-T1 interspaces are easily visualized for all posterior approach cervical procedures.



Right C3 and C4 pillar view of Alicia. The target articular pillars are visualized for posterior approach facet/medial branch procedures.



SPINE POSITIONING SYSTEM II

PATIENT - DON

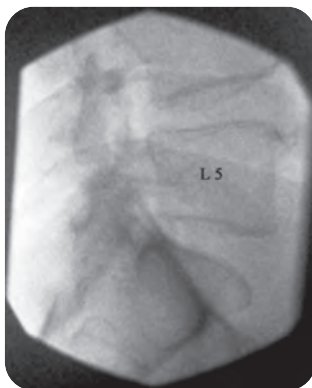
COMPONENTS USED: Platform Frame, Crescent Face Rest Pad, Contoured Torso Support Pad, 8" x 22" Rectangular Adjuster Pad, 8" Semi-Round Bolster (not pictured)



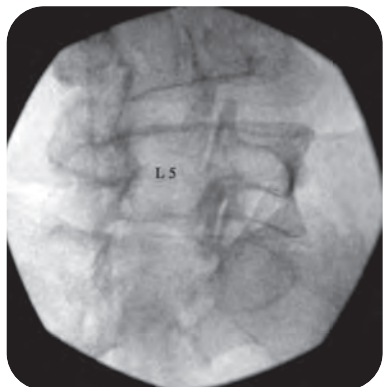
SPS II set up for Don shown here



Don in the SPS II while obtaining an oblique image of the lumbar spine



Lateral image of the lumbar spine



Right oblique image of the lumbar spine



AP image of the lumbar spine



OAKWORKS[®]
MEDICAL



SPINE POSITIONING SYSTEM II

PATIENT - MARY

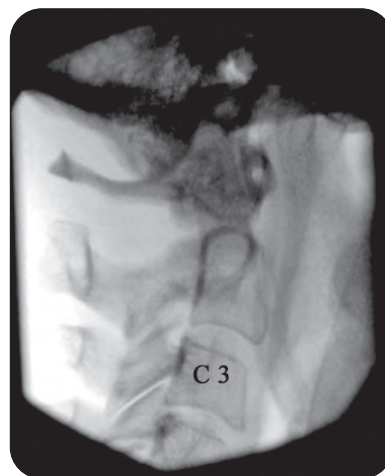
COMPONENTS USED: Platform Frame, Crescent Face Rest Pad, Contoured Torso Support Pad, Contoured Torso Wedge, 7" x 12" Rectangular Adjuster Pad, 8" Semi-Round Bolster (not pictured)



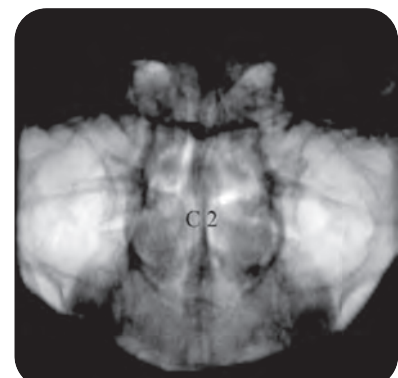
SPS II set up for Mary shown here



Mary in the SPS II while obtaining an AP image through the C1-2 segment



Lateral image through the C1-3 segments



AP image through the C1-2 joints



SPINE POSITIONING SYSTEM II

PATIENT - DEBBIE

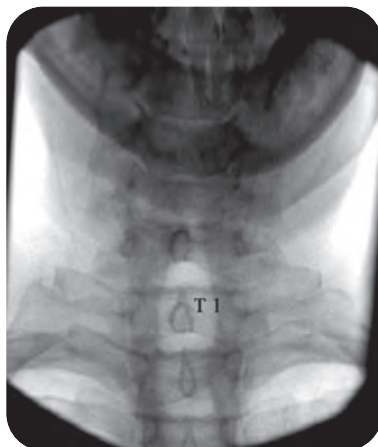
COMPONENTS USED: Platform Frame, Crescent Face Rest Pad, Contoured Torso Support Pad, Contoured Torso Wedge, 7" x 12" Rectangular Adjuster Pad, 8" Semi-Round Bolster (not pictured)



SPS II set up for Debbie shown here



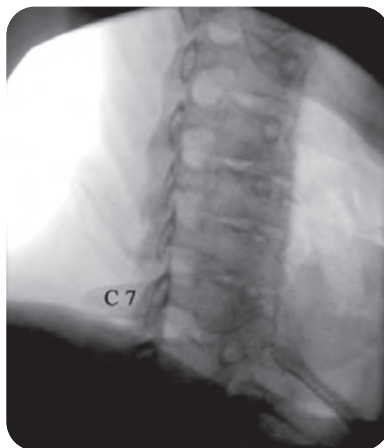
Debbie in the SPS II while obtaining a lateral cervical image.



AP image of the cervical spine while imaging through the C7-T1 interlaminar space.



Complete lateral image of the cervical spine including the C7-T1 segment.



Contralateral oblique of the cervical spine.



OAKWORKS[®]
MEDICAL

