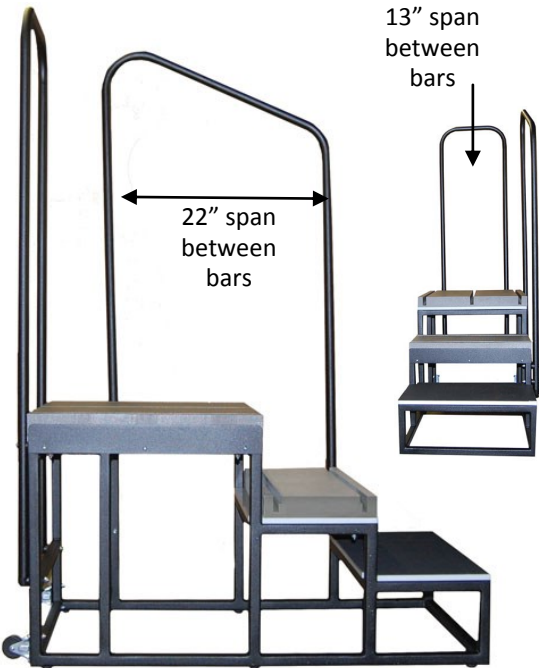
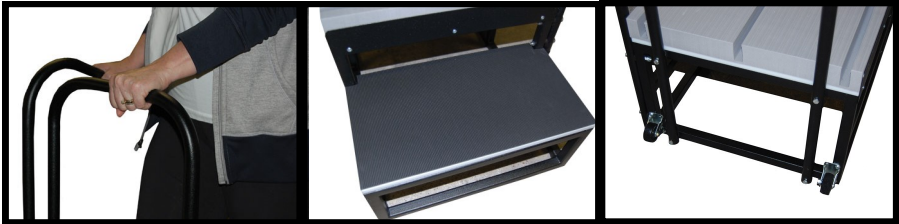



WEIGHT BEARING PLATFORM Cat# WMP-14

Taller Weight Bearing Platform that allows for weight bearing imaging of the knees, ankles and feet. Three receptor slots on the top platform and two slots on the second platform. Platforms are made of Made of 1" tubular steel, high density polyethylene , and coated crosslink closed cell high density grey foam supportive of weight distribution. Channels will accommodate most cassettes and digital receptors. 52" high safety rails provides patient stability. 350 lb weight capacity. All steel frame with 40" x 20" base. Rails and base are textured black. Two heavy duty casters in back for easy moving.

Top of 1st Platform with Comfort Top:	L x W x H	20" x 20" x 23"
Top of 2nd Platform with Comfort Top:	L x W x H	10" x 20" x 19.5"
Top of 3rd Platform and anti-skid mat:	L x W x H	10 x 20 x 8.5"
Top of 1st Platform FRAME ONLY	L x W x H	20" x 20" x 22
Top of 2nd Platform FRAME ONLY	L x W x H	10" x 20" x 15.5
Handrail:		59" tall
Channel width: 11/16 with 5/16 insert for total width of:		1"
Actual Weight		92 lbs
Shipping Weight		158 lbs
Overall Dimension:	L x W x H	42" x 20" x 59





Z&Z Medical

1924 ADAMS ST
CEDAR FALLS, IA
50613

zzmedical.com

800.410.9575