

CLEAR-LEAD™ PERSONAL MOBILE BARRIER

ASSEMBLY INSTRUCTIONS

042-583



BIODEX

Biodex Medical Systems, Inc.

20 Ramsey Road, Shirley, New York, 11967-4704

Tel: 800-224-6339 (Int'l 631-924-9000),

Fax: 631-924-9241 Email: info@biodex.com, www.biodex.com

This manual covers assembly instruction for the following product:

042-583 Barrier, Mobile, Clear-Lead™, Hour-Glass Window
0.5 mm LE Window size 48" h x 24" w
(122 x 61 cm)

This Clear-Lead Mobile Barrier is intended to supply a minimum of 0.5mm lead equivalence radiation protection.

Assembly Instructions:

NOTE: Do not remove the protective paper before completing assembly to avoid accidental scratches.

1. Unpack and locate:
 - a. One shield sub-assembly
 - b. Two leg sub-assemblies with casters
 - c. One bag containing the parts numbered 3-5 on schematic drawing (See Figure 2.)
2. Lay shield sub-assembly on a flat surface (e.g., table) with the bottom extending over the edge. (See Figure 1.)

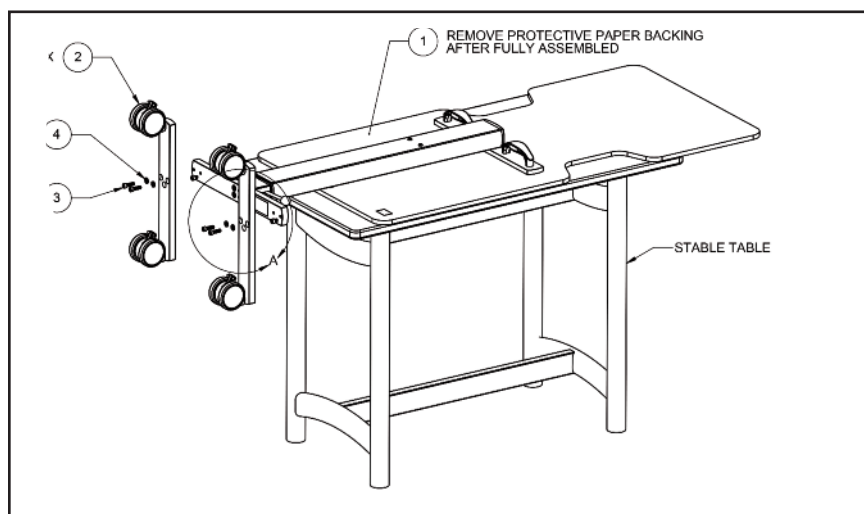


Figure 1.

3. Align 3rd bolt on each leg assembly with protruding, pre-installed screw on barrier sub-assembly. Using provided $\frac{1}{4}$ " Allen key - attach leg sub-assemblies from bottom with provided hex socket cap screws and washers. Do not fully tighten.
4. Apply 2-3 drops of Loctite to threads of flat-head screws, and using $\frac{3}{16}$ " Allen key - insert flat-head screws from both sides as shown on the drawing.
5. Fully tighten the four flat-head screws.
6. Now go back and fully tighten all four hex socket cap screws using the provided $\frac{1}{4}$ " Allen key.
7. Place the assembled barrier upright on its casters and carefully remove the masking paper from both sides of the window.

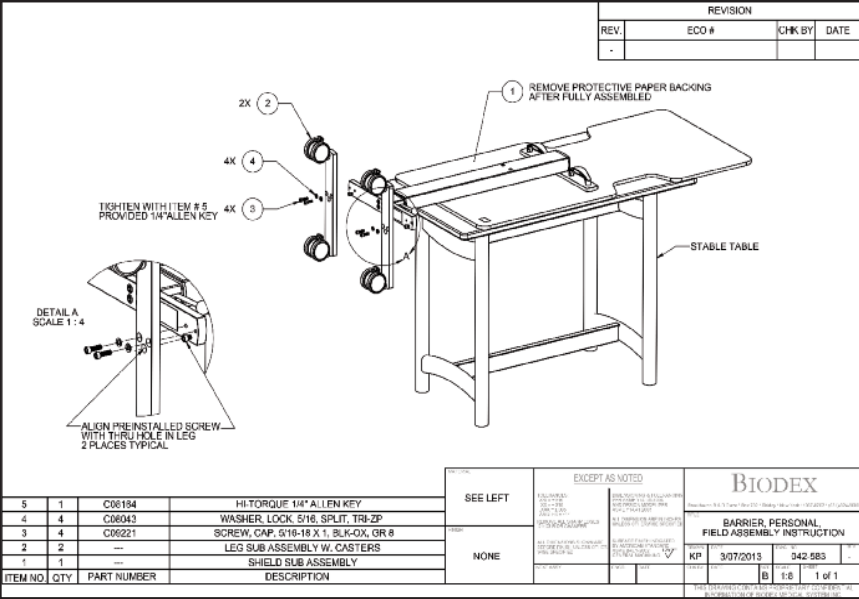


Figure 2.

Routine Care and Cleaning Instructions

1. Wipe Clear-Lead panel with a soft cloth, using only water or ethanol, if necessary. Do not leave Clear-Lead panel wet; dry panel with a soft cloth.
2. Do not use abrasives on window panel.
3. Scratches can be removed by using a quality acrylic polish such as Novus Polish #2.



CAUTION: Avoid tipping barrier more than 10 degrees from perpendicular as it may fall over.



ATTENTION: Éviter le basculement de barrière plus de 10 degrés de perpendiculaire comme il peut tomber.



CAUTION: Forcing the barrier up or down without releasing the foot pedal may result in permanent damage.



ATTENTION: Forcer la barrière vers le haut ou vers le bas sans relâcher la pédale peut entraîner des dommages permanents.

Authorized European Community Representative:



Emergo Europe
Molenstraat 15
2513 BH, The Hague
The Netherlands

BIODEX

Biodex Medical Systems, Inc.

20 Ramsey Road, Shirley, New York, 11967-4704

Tel: 800-224-6339 (Int'l 631-924-9000),

Fax: 631-924-9241 Email: info@biodex.com, www.biodex.com